

**CONVERGE**<sup>®</sup>  
AN ARROW COMPANY

**HOW DOES CONVERGE DEFINE QUALITY**

**DONE BY: ANA BRION**



What is QUALITY



## Converge's QUALITY

Converge's quality-management program establishes safeguards that protect your supply chain by detecting counterfeit components and preventing them from entering your supply chain.

Every CONVERGE employee must maintain quality consciousness in every activity and comply with the requirements of the Quality Management System.



is the fundamental ingredient to our success as an organization

Keep COUNTERFEIT from ever reaching the market-virtually eliminating risk!!!!

# HOW IS CONVERGE BEST IN CLASS?

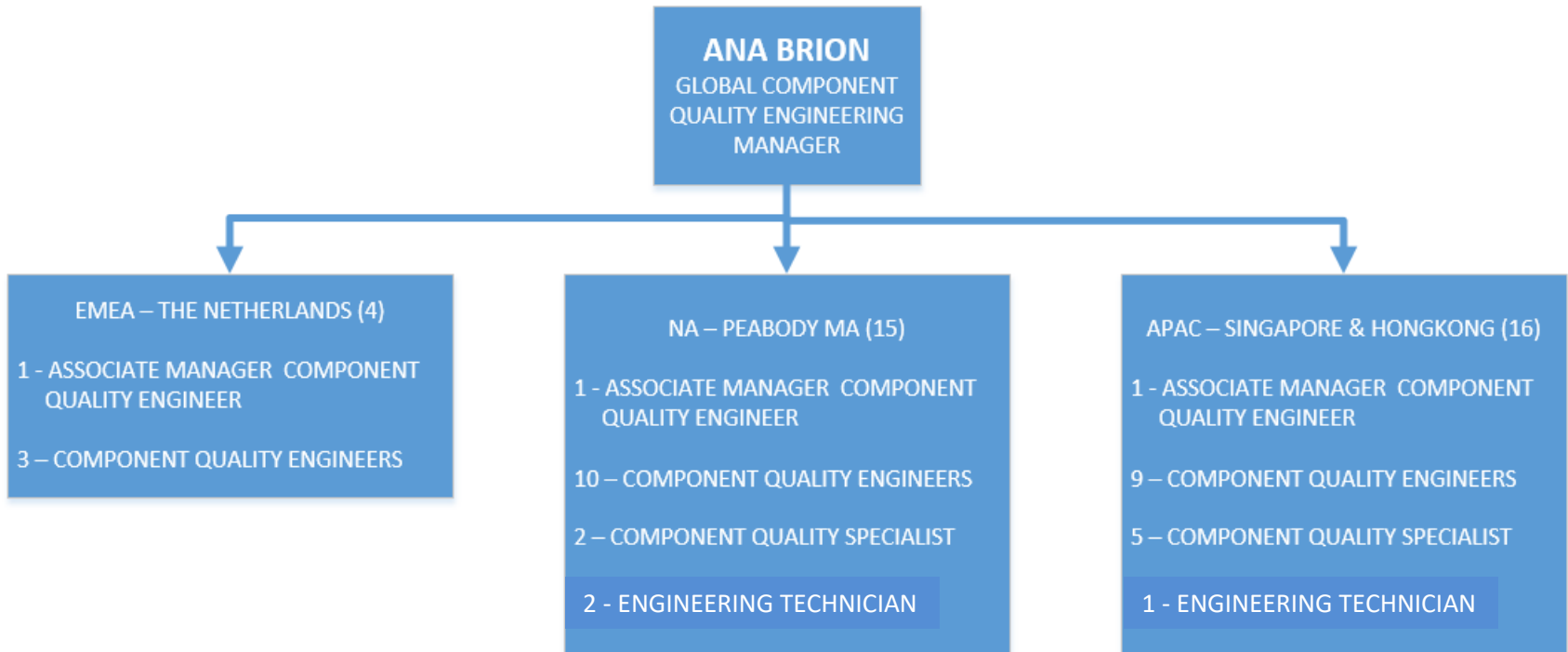
## 1. WE HAVE THE BEST IN CLASS PROCUREMENT SYSTEM

- Rigid Vendor Management Program
- Robust physical Commodity Management purchasing presence on every ground in every region of the world!
- System driven performance analytics we apply to our supplier
- Local relationship and knowledge of our supplier

# HOW IS CONVERGE BEST IN CLASS?

## 2. We have Best in Class Inspection and Testing Services

**TOTAL of 35 COMPONENT ENGINEERS**  
**Doing the Detailed Inspection Across the Globe**





# CONVERGE INSPECTION CHECKLIST

CONVERGE CPU Receiving, Inspection, Testing & Shipping Checklist						
Converge Purchase Order (PO) / Lot Number		Received DATE	Tuesday, May 29, 2012			
Received By						
PARTS INITIAL INCOMING DETAILS						
VENDOR/SUPPLIER NAME	Total PO Qty	Packaging condition upon receipt (✓/ choose based on the following conditions)				
Inbound Total weight	Incoming Qty Received	Factory Sealed Box/Bboxes or Bag/Bags <input type="checkbox"/>				
# of Inbound Boxes	Qty rejected	Factory packaging <input type="checkbox"/>				
Inbound Airway Bill # (AWB)	Qty Accepted in the system	3rd party packaging <input type="checkbox"/>				
Freight Charges	Parts Inspection location: <input type="checkbox"/> Peabody <input type="checkbox"/> SS <input type="checkbox"/> HK <input type="checkbox"/> BSA	Mixed Factory and 3rd party packaging <input type="checkbox"/>				
PO PART NUMBER	Parts floor location:	PO have SCW when received? <input type="checkbox"/> YES <input type="checkbox"/> NO				
Auto Part number checking versus the actual part number (3 lines)						
Auto Part number checking versus the Product Alert List						
Manufacturer	Actual part number Received	Lot code/number	DATECODE	COO	Qty Breakdown	Parts packaging
Remarks :						

## CONVERGE CPU INSPECTION & TESTING CHECKLIST

CONVERGE Multi-Point Receiving, Inspection & Shipping Checklist						
Converge Purchase Order (PO) / Lot Number		Received DATE	Tuesday, May 29, 2012			
Received By						
PARTS INITIAL INCOMING DETAILS						
VENDOR/SUPPLIER NAME	Total PO Qty	Packaging condition upon receipt (✓/ choose based on the following conditions)				
Inbound Total weight	Incoming Qty Received	Factory Sealed Box/Bboxes or Bag/Bags <input type="checkbox"/>				
# of Inbound Boxes	Qty rejected	Factory packaging <input type="checkbox"/>				
Inbound Airway Bill # (AWB)	Qty Accepted in the system	3rd party packaging <input type="checkbox"/>				
Freight Charges	Parts Inspection location: <input type="checkbox"/> Peabody <input type="checkbox"/> SS <input type="checkbox"/> HK <input type="checkbox"/> BSA	Mixed Factory and 3rd party packaging <input type="checkbox"/>				
PO PART NUMBER	Parts floor location:	PO have SCW when received? <input type="checkbox"/> YES <input type="checkbox"/> NO				
Auto Part number checking versus the actual part number						
Auto Part number checking versus the Product Alert List						
Manufacturer	Actual part number Received	Lot code/number	DATECODE	COO	Qty Breakdown	Parts packaging
Remarks :						

## MULTI-POINT INSPECTION CHECKLIST

CONVERGE ASSEMBLIES Receiving, Inspection & Shipping Checklist						
Converge Purchase Order (PO) / Lot Number		Received DATE	Tuesday, May 29, 2012			
Received By						
PARTS INITIAL INCOMING DETAILS						
VENDOR/SUPPLIER NAME	Total PO Qty	Packaging condition upon receipt (✓/ choose based on the following conditions)				
Inbound Total weight	Incoming Qty Received	Factory Sealed Box/Bboxes or Bag/Bags <input type="checkbox"/>				
# of Inbound Boxes	Qty rejected	Factory packaging <input type="checkbox"/>				
Inbound Airway Bill # (AWB)	Qty Accepted in the system	3rd party packaging <input type="checkbox"/>				
Freight Charges	Parts Inspection location: <input type="checkbox"/> Peabody <input type="checkbox"/> SS <input type="checkbox"/> HK <input type="checkbox"/> BSA	Mixed Factory and 3rd party packaging <input type="checkbox"/>				
PO PART NUMBER	Parts floor location:	PO have SCW when received? <input type="checkbox"/> YES <input type="checkbox"/> NO				
Auto Part number checking versus the actual part number (3 lines)						
Auto Part number checking versus the Product Alert List						
Manufacturer	Actual part number Received	Lot code/number	DATECODE	COO	Qty Breakdown	Parts packaging
Remarks :						

## ASSEMBLIES INSPECTION CHECKLIST

# OVERVIEW OF THE DEATILED INSPECTION BY THE COMPONENT QUALITY ENGINEERS



**Optical Microscopy - Sampling Visual Inspection**



**X-ray Sampling inspection**



**XRF - RoHS testing**

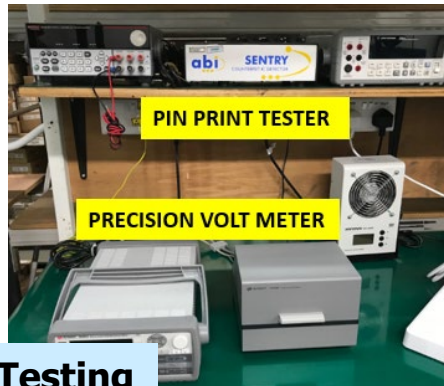


**DECAPSULATION**



**AUTOMATED CURVE TRACER**

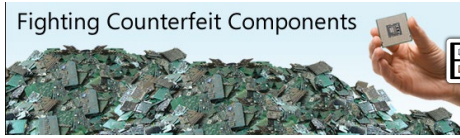
**PARAMETRIC Testing**



**PIN PRINT TESTER**

**PRECISION VOLT METER**

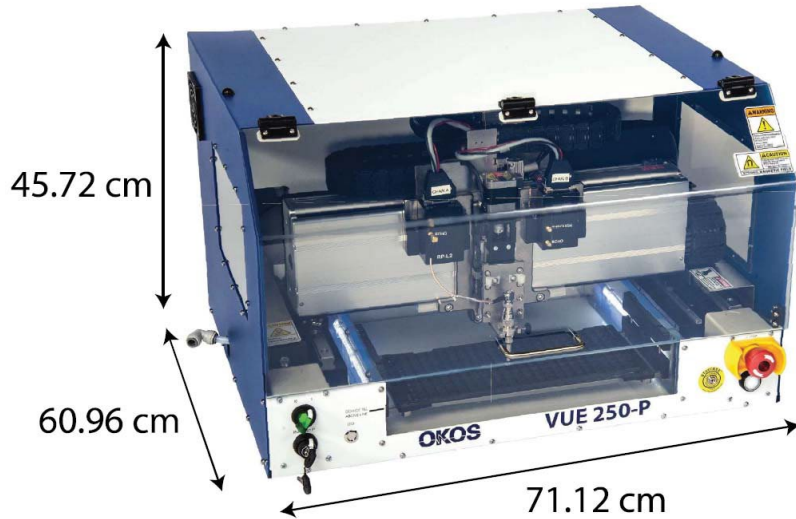




# BEST IN CLASS – HIGH END SCANNING MICROSCOPE

Coming very soon... High End Microscope

## SCANNING ACOUSTIC MICROSCOPE



## SCANNING ELECTRON MICROSCOPE



# HOW IS CONVERGE BEST IN CLASS?

## 3. Best in Class Quality, Environmental Certification



<b>ISO 9001</b>	<b>ISO 14001</b>	<b>OHSAS 18001</b>	<b>ANSI/ESD S20.20</b>	<b>AS6081</b>	<b>AS9120</b>

# 3. Industry affiliation



## C-TPAT - CUSTOMS-TRADE PARTNERSHIP AGAINST TERRORISM

C-TPAT is a voluntary government/business initiative to build cooperative relationships that strengthen and improve the overall international supply chain and U.S. border security.



## IDEA - INDEPENDENT DISTRIBUTORS OF ELECTRONICS ASSOCIATION

Independent Distributors of Electronics Association (IDEA) is an association whose charter is to improve the quality of products and services through a quality certification program, educational seminars, and conferences and to promote the study, development, and implementation of techniques and methods designed to improve the business of independent distributors. Converge quality inspection process is based on the IDEA-STD-1010, the first inspection standard addressing the need for the inspection of electronic components traded in the open market. Additionally, Converge's entire inspection staff is IDEA-ICE-3000-certified.



## ERAI - MEMBERSHIP

ERAI is a resource for risk assessment information and insight enabling us to analyze risk mitigation on vendors, customers, and parts.



## GIDEP - GOVERNMENT-INDUSTRY DATA EXCHANGE PROGRAM

GIDEP is a cooperative program between government and industry members seeking to reduce or eliminate expenditures of resources by sharing technical information.



## COMPONENT OBSOLESCENCE GROUP (COG) DEUTSCHLAND E.V.

COG is made up of professional industry members concerned with obsolescence management. COG encourages a proactive approach to the management of obsolescence and the development of processes for dealing with it.

## COMMERCIAL AND GOVERNMENT ENTITY CODE (CAGE)

Commercial and Government Entity Code, or CAGE Code, is an unique identifier that provides a standardized method of identifying a given facility at a specific location. It is assigned to suppliers/distributors to various government or defense agencies, as well as government agencies themselves and other various organizations.

# 3WQZ6

QUESTIONS???